



European  
Commission

# Marie Skłodowska-Curie Actions

## *Participation opportunities for Taiwanese stakeholders*

**Thierry Devars**

European Commission

Directorate-General for Education, Youth, Sport and Culture

Marie Skłodowska-Curie Actions Policy Unit

*[thierry.devars@ec.europa.eu](mailto:thierry.devars@ec.europa.eu)*

# The EU – A Partner of Excellence in R&I

500 million people - 28 countries - a single market\*



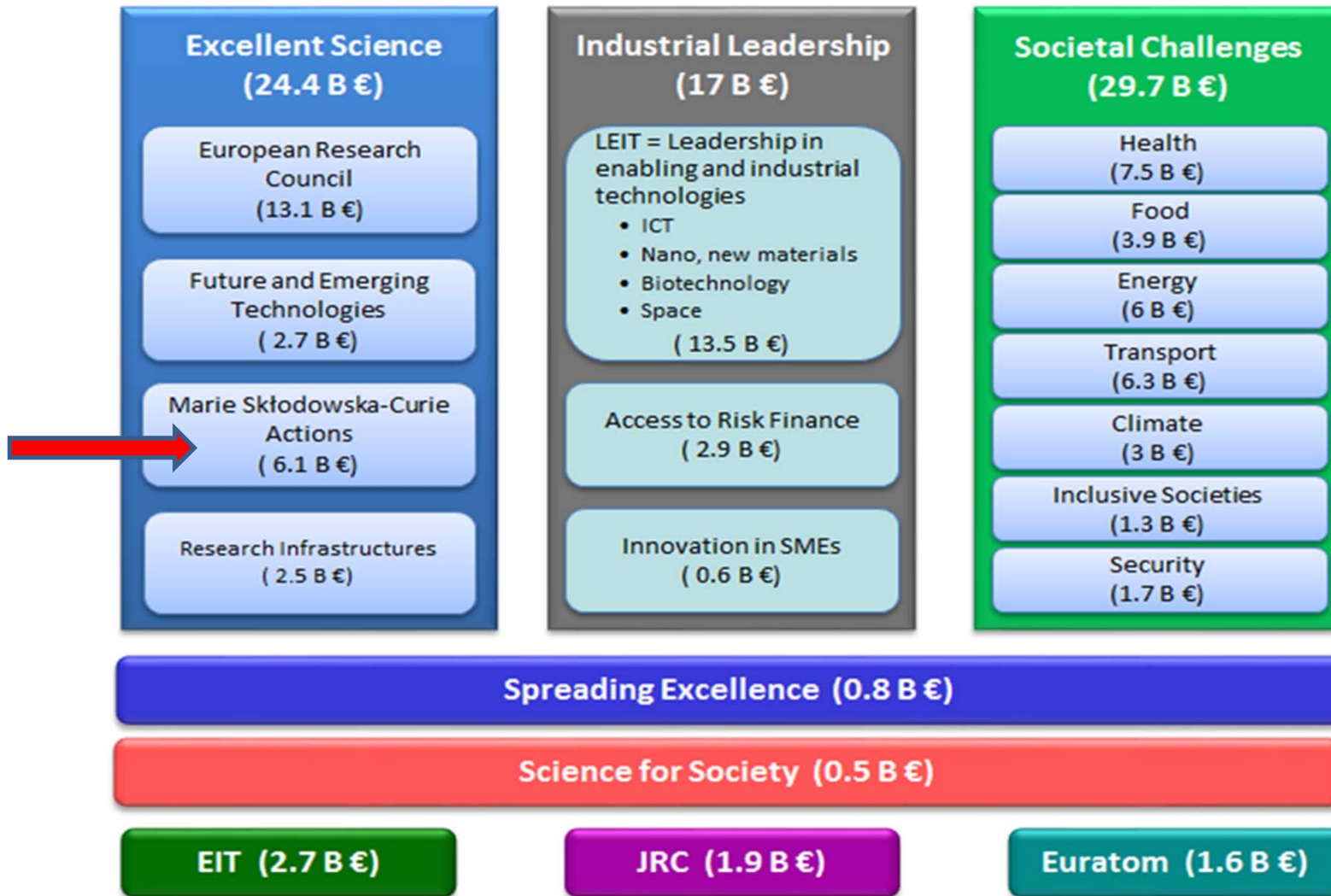
- 7% of the World's population
- 24% of world expenditure on research
- 32% of high-impact publications
- 32% of patent applications

\*Free movement of people, goods, services, capital and **knowledge**

# The Horizon 2020 programme

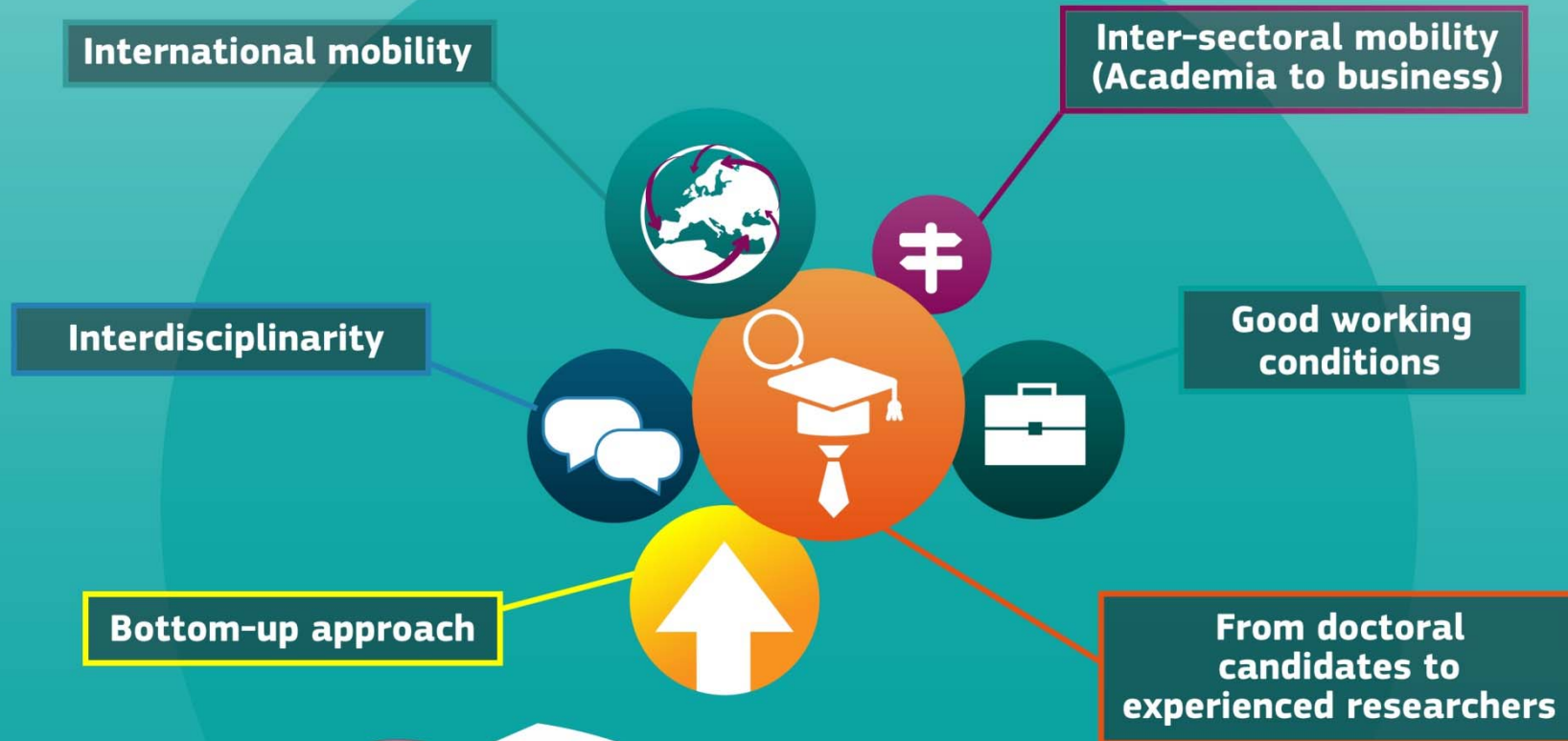
- **Almost €80 billion research and innovation funding programme (2014-2020, current prices including inflation)**
- **A core part of Europe 2020, Innovation Union & European Research Area:**
  - Responding to the economic crisis to invest in future jobs and growth
  - Addressing people's concerns about their livelihoods, safety and environment
  - Strengthening the EU's global position in research, innovation and technology





# MSCA key features

## Research training and career development





European  
Commission

# Mobility to/from 'Europe' ?

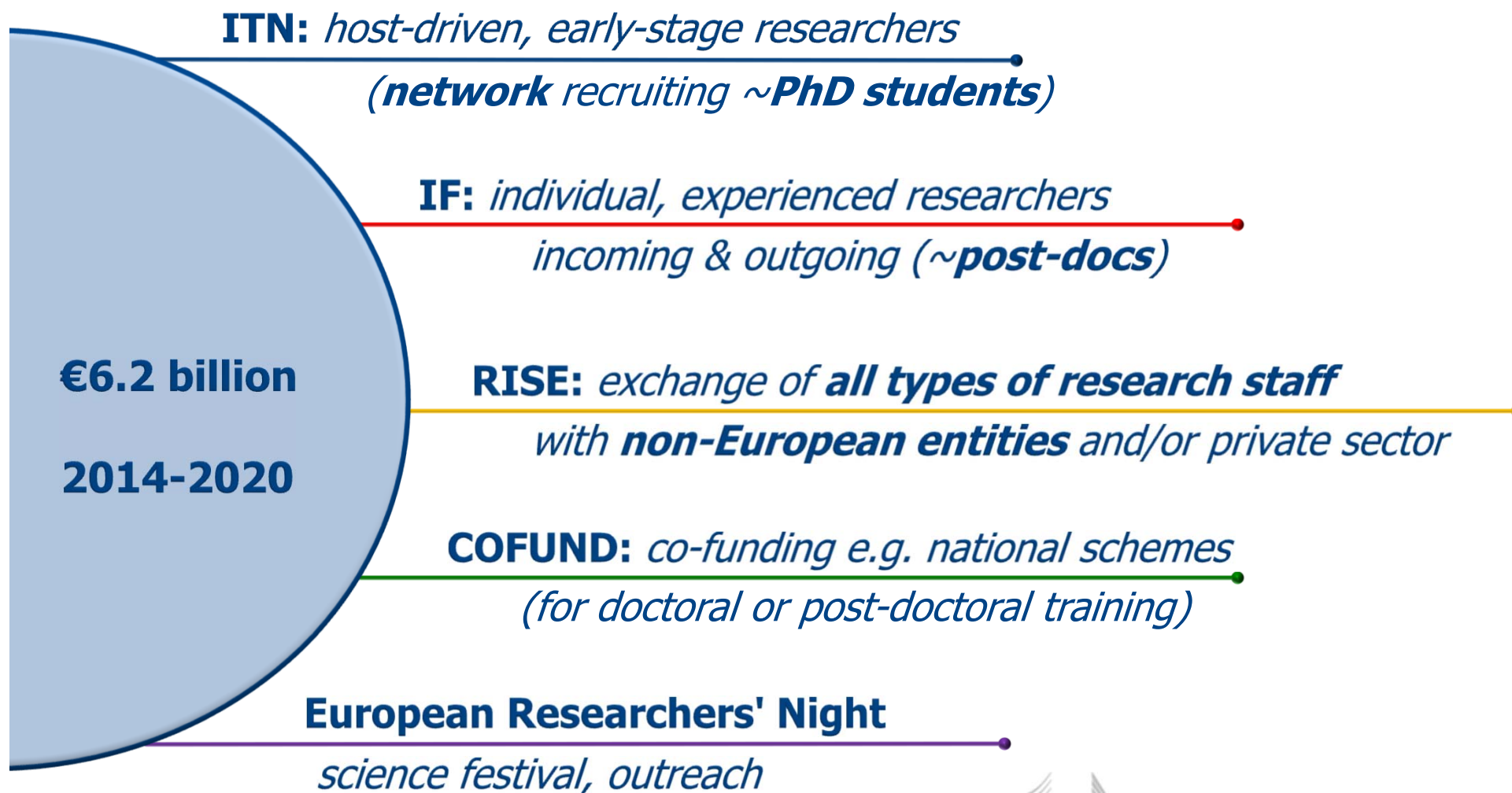
**28 EU Member States (MS) + 16 Associated Countries (AC)**

Austria, Belgium, Bulgaria,  
Croatia, Cyprus, Czech Republic,  
Denmark, Estonia, Germany,  
Greece, Finland, France,  
Hungary, Ireland, Italy, Latvia,  
Lithuania, Luxemburg, Malta,  
Netherlands, Poland, Portugal,  
Romania, Slovakia, Slovenia,  
Spain, Sweden, United Kingdom

Albania, Armenia, Bosnia &  
Herzegovina, Faroe Islands, FYROM,  
Georgia, Iceland, Israel, Moldova,  
Montenegro, Norway, Serbia,  
Switzerland, Tunisia, Turkey, Ukraine



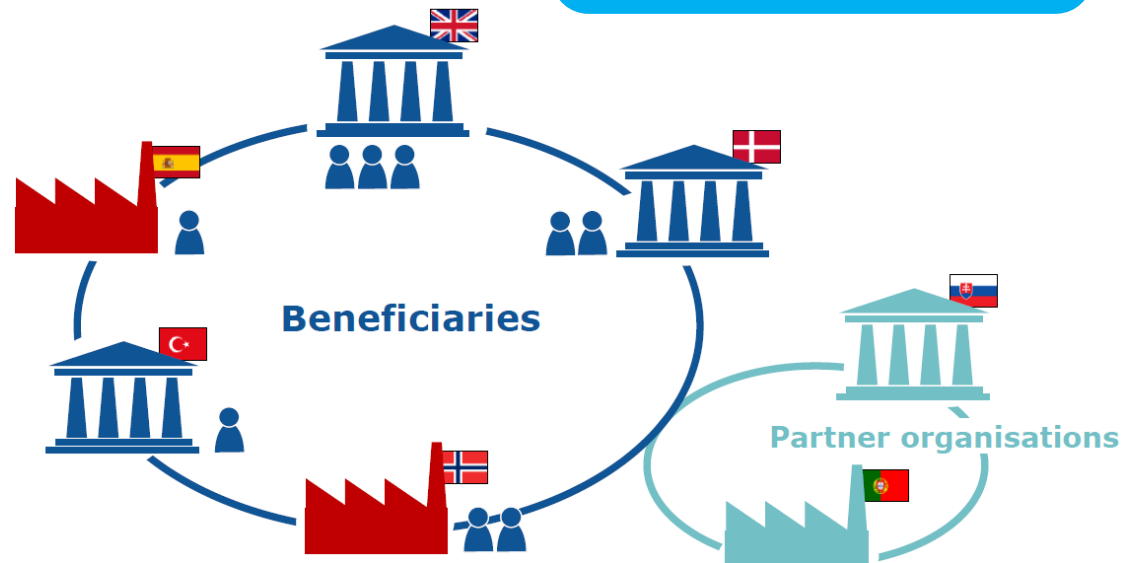
# MSCA: the different actions



# Innovative Training Networks (ITN)

## European Training Networks

≥ 3 partners from Europe,  
joint research programme  
*duration: 48 months*  
*~ 15 PhD fellows*



## European Industrial Doctorates

≥ 2 partners from Europe,  
doctoral training together  
with non-academic sector  
*≥ 50% of fellowship in non-academic sector participant*

## European Joint Doctorates

≥ 3 partners from Europe,  
joint research programme  
*joint, multiple, or dual doctoral degree*



'Non-academic'/'industry' sector means large or small businesses, government, NGO's, musea, hospitals,...



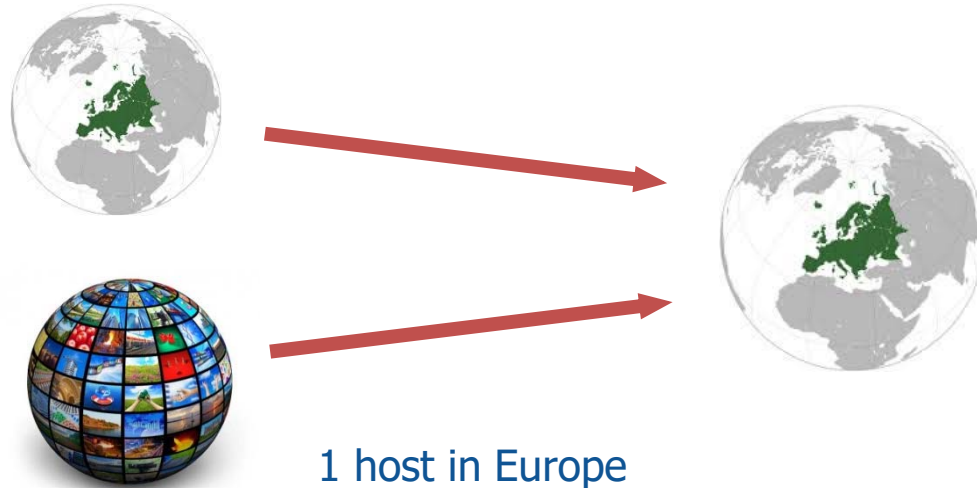
European Commission | Education and Culture



# Individual Fellowships (IF)

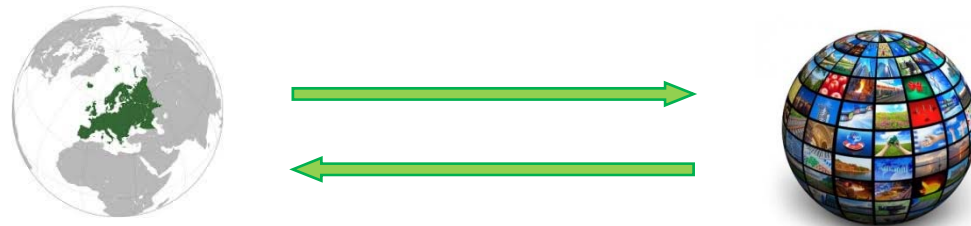
## European Fellowships

For fellows coming to or moving within Europe  
duration: 12-24 months  
(exceptionally to 36 months)



## Global Fellowships

For fellows from Europe going to Third Country  
(12-24 months) & returning to Europe (12 months)



# What are Individual Fellowships?



## What are IFs?

- Individual trans-national fellowships to the best and most promising **experienced\*** researchers  
(\* with PhD or 4-year full-time equivalent research experience)

### European Fellowships

Standard (ST)

Career Restart Panel (CAR)

Re-integration Panel (RI)

Society & Enterprise Panel (SE)

### Global Fellowships

- ✓ **Secondments** of 3 – 6 months in Europe (MS or AC), for greater impact
- ✓ Specific eligibility criteria
- ✓ Career development with an appropriate **inter-sectoral** dimension

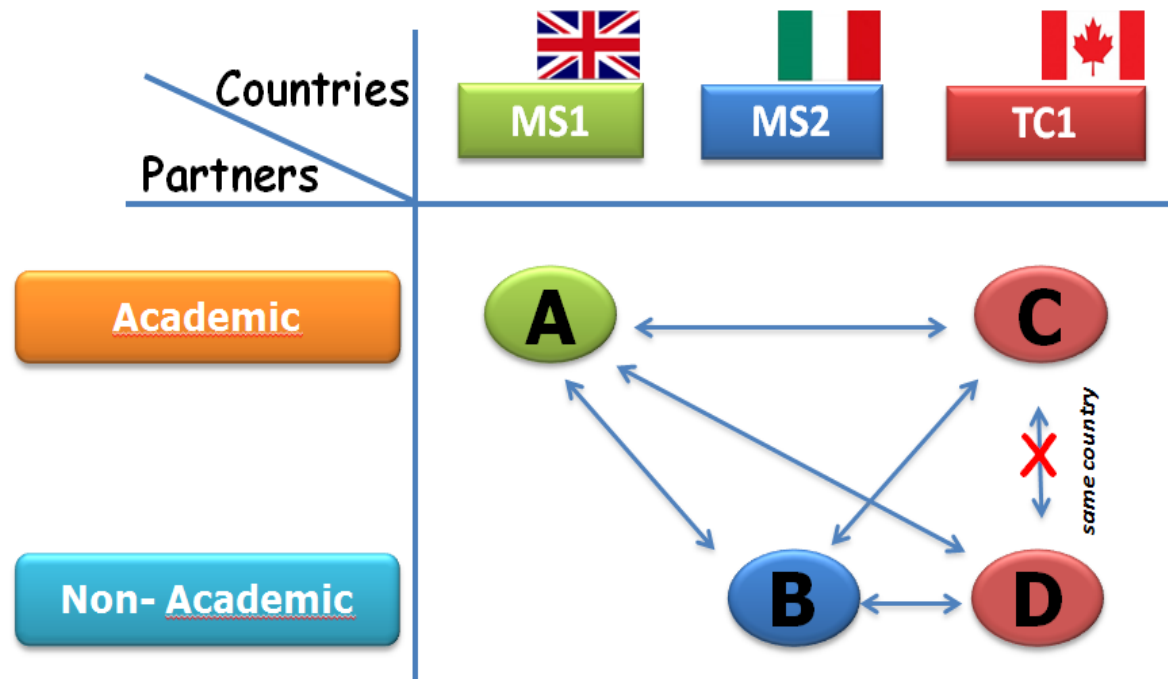
# Research and Innovation Staff Exchange (RISE)


International/inter-sector transfer of knowledge, sharing of ideas & culture

**RISE funds the mobility of staff members**

Common research and innovation project, funded via other channels

**Secondments** from 1 to 12 months (project duration up to 4 years)



 Usually RISE consortia are the basis for new research collaborations with other (EU) funds

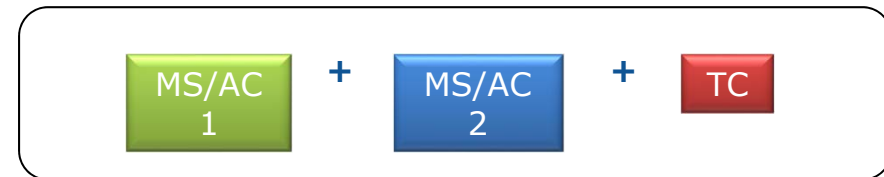
# Research and Innovation Staff Exchange (RISE)

## Two possible set-ups



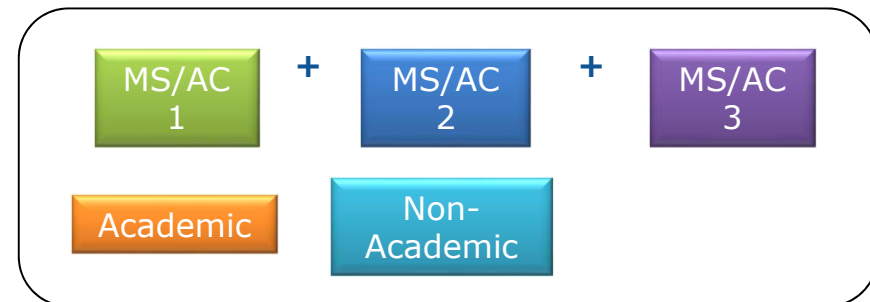
### "International"

Secondments can be *intra-* or *inter-*sectoral



### "European"

Secondments must be inter-sectoral



# What is funded?

	Participating entity	MSCA fellow	
ITN	Research, networking, training costs	1800 €	
	Management and indirect costs	1200 €	
IF	Research, networking, training costs	800 €	
	Management and indirect costs	650 €	
RISE	Research, networking, training costs	1800 €	
	Management and indirect costs	700 €	
		Living allowance*	3270 €
		Mobility allowance	600 €
		Family allowance	500 €
		Living allowance*	4880 €
		Mobility allowance	600 €
		Family allowance	500 €
		Top-up allowance	2100 €

 (\*) The living allowance is multiplied by a correction coefficient (e.g. 104% Australia, 130% Norway)

# Co-funding national, regional, or institutional projects (COFUND)

**Objective:** *Stimulating – through EU cofunding – new or existing regional, national or international programmes to foster excellence in researcher training, mobility and career development*

- **Mono-beneficiary:** organisations in EU MS / AC which fund or manage doctoral or post-doctoral fellowship programmes
- **Researchers apply to the organisation**
- **Project duration:** up to 60 months
- **Fellowship duration:** min. 3 months / max. 36 months
- **EU contribution:** covers living allowances for researchers and management costs (minimum income rule applies)
- **50% co-funding** for established unit costs

**Doctoral  
Programmes**

*For:  
Early Stage  
Researchers*

**Fellowship  
Programmes**

*For:  
Experienced  
Researchers*

# Researchers' Night (NIGHT)

**Why?** Bring researchers and general public closer together, demonstrate the impact of research on citizens' daily lives, encourage young people to embark on science careers...

**When?** Last Friday of September (since 2005)

**Where?** Events in +300 cities across Europe

**Who?** 18,000 researchers, > 1 million citizens in 2017

**How much?** € 8 Million in 2020 (+75% vs. 2017)

**Targets?** General public (especially children, young people)

**What?** "Edutainment" through hands-on activities, demonstrations, science shows, games, competitions, debates, workshops, competitions, etc.



European  
Commission

## Current participation of Taiwan

Action	Number of Participations of TW organisations*		EU contribution (in EUR million) to TW organisations	Number Of Projects	TW researchers involved	Researchers going to TW organisations
COFUND	N/A	(-)	N/A	N/A	6	0
IF	N/A	(-)	N/A	N/A	9	0
ITN	2	(2)	N/A	2	21	0
RISE	5	(5)	N/A	4	4	7
<b>Total:</b>	<b>7</b>	<b>(7)**</b>	<b>N/A</b>	<b>6</b>	<b>40</b>	<b>7</b>

\* Number of Participations is the number of participations by organisations i.e. the total number of times that organisations in this country have participated in each action.

\*\*In brackets - partner organisations (included in the total number).

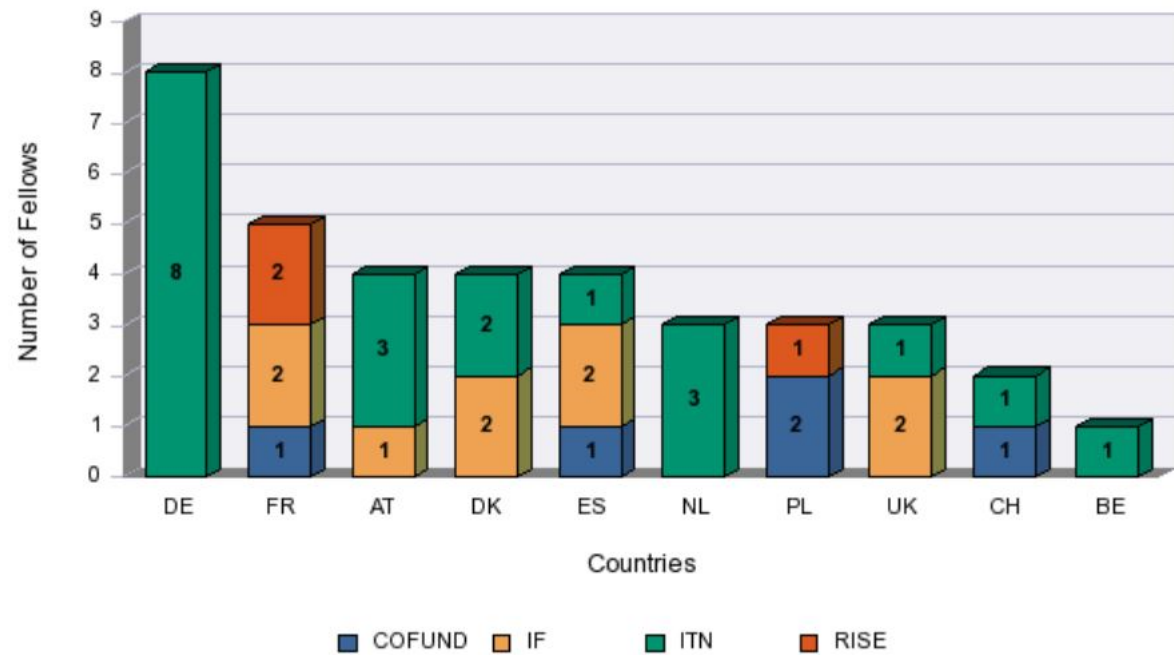
Project Number	Action	Participant Legal Name	Short Name	Country	Participant Role
644268	MSCA-RISE	KINGS METAL FIBER TECHNOLOGIES CO.LTD	Kings Metal Fi	TW	PARTNERORGANIZATION
644268	MSCA-RISE	TAIWAN TEXTILE RESEARCH INSTITUTE	Tawan Textile	TW	PARTNERORGANIZATION
676154	MSCA-ITN-EJD	National Yunlin University of Science and Technolog	NYUST	TW	PARTNERORGANIZATION
691215	MSCA-RISE	NATIONAL CHENG KUNG UNIVERSITY	NCKU	TW	PARTNERORGANIZATION
765198	MSCA-ITN-ETN	Taiwan CE Network		TW	PARTNERORGANIZATION
777822	MSCA-RISE	ACADEMIA SINICA	AS	TW	PARTNERORGANIZATION
778158	MSCA-RISE	NATIONAL TAIWAN UNIVERSITY	NATIONAL TA	TW	PARTNERORGANIZATION
<b>Sum: 6</b>					





European  
Commission

TW fellows (nationals) grouped by country of destination (top 10 countries)



# Open/Next calls deadlines & budget

Funding scheme	2018 Call opens	2018 Call closes	Budget
<b>IF</b>	12/04/2018	12/09/2018	€273 million

Funding scheme	2019 Call opens	2019 Call closes	Budget
<b>ITN</b>	13/09/2018	15/01/2019	€470 million
<b>IF</b>	11/04/2019	11/09/2019	€294 million
<b>RISE</b>	04/12/2018	02/04/2019	€80 million

**All these calls are fully open to participation from Taiwan !!**

# Evaluation & Award Criteria



Excellence	Impact	Quality and Efficiency of Implementation
Quality and credibility of the research/innovation project; level of novelty, appropriate consideration of inter/multidisciplinary and gender aspects	Enhancing the future career prospects of the researcher after the fellowship	Coherence and effectiveness of the work plan, including appropriateness of the allocation of tasks and resources
Quality and appropriateness of the training and of the two way transfer of knowledge between the researcher and the host	Quality of the proposed measures to exploit and disseminate the project results	Appropriateness of the management structure and procedures, including risk management
Quality of the supervision and of the integration in the team/institution	Quality of the proposed measures to communicate the project activities to different target audiences	Appropriateness of the institutional environment (infrastructure)
Potential of the researcher to reach or re-enforce professional maturity/independence during the fellowship		

**Each criterion will be scored out of 5. Decimal points will be given.**



## MSCA National Contact Point (NCP) for Taiwan:

### **Dr Yen-Liang (Eric) Lin - Taiwan**

Marie Skłodowska-Curie actions on skills, training and career development

**Organisation name:** National Taipei University of Technology

**Address:** 1, Sec. 3, Zhongxiao E. Rd., 10608, Taipei, Taiwan

Tel: +886-2-2771-2171 ext.6521

**Send Mail:** [contact@ncp.tw](mailto:contact@ncp.tw) - Website: <http://www-en.ntut.edu.tw/>

**Update date:** 12-FEB-18 - **Record Control Number:** 5000775

# More information on MSCA

**Marie Skłodowska-Curie website**

<http://ec.europa.eu/msca>

**What's new? MSCA work programme 2018**

[http://ec.europa.eu/research/mariecurieactions/library\\_en](http://ec.europa.eu/research/mariecurieactions/library_en)

**Horizon2020**

<http://ec.europa.eu/programmes/horizon2020>

**Participant Portal (calls, online application, documents, FAQ, NCPs)**

<http://ec.europa.eu/research/participants/portal>

**Euraxess (jobs, rights, services, etc.)**

<http://ec.europa.eu/euraxess/>

**European Charter for Researchers**

<http://ec.europa.eu/euraxess/index.cfm/rights/whatIsAResearcher>

**How to find partners**

<https://cordis.europa.eu/partners/web/guest>

**MSCA on Facebook**

<https://www.facebook.com/Marie.Curie.Actions>

**MSCA on Twitter**

**@MSCactions**



# Questions?

## **H2020 Help desk**

<http://ec.europa.eu/research/index.cfm?pg=enquiries>

## **Frequently Asked Questions**

<http://ec.europa.eu/research/participants/portal/desktop/en/support/faq.html>

## **National Contact Points**

[http://ec.europa.eu/research/participants/portal/desktop/en/support/national\\_contact\\_points.html](http://ec.europa.eu/research/participants/portal/desktop/en/support/national_contact_points.html)

### **Marie Curie Alumni Association**

<https://www.mariecuriealumni.eu/>

<https://www.net4mobilityplus.eu/>

**Net4M**bility