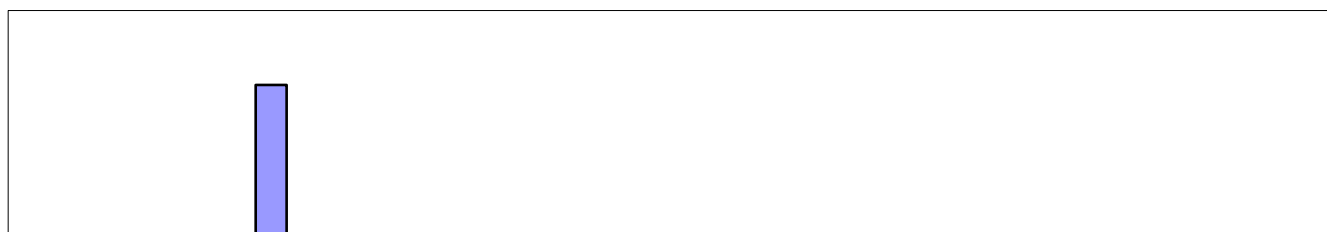
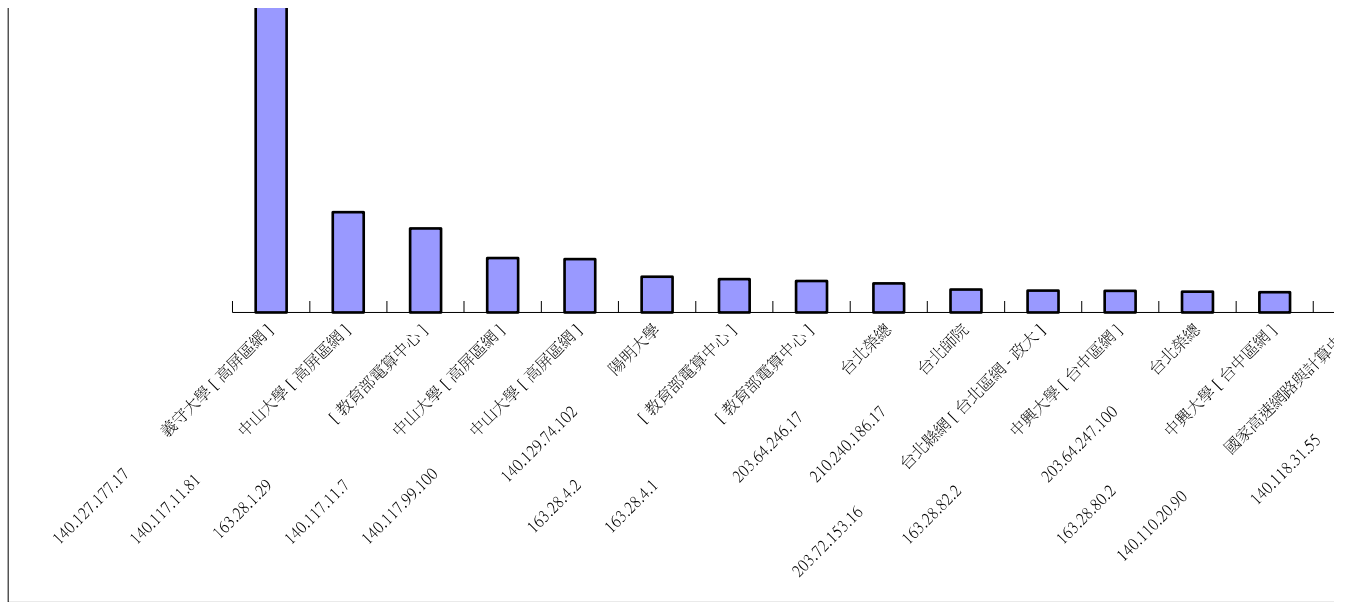


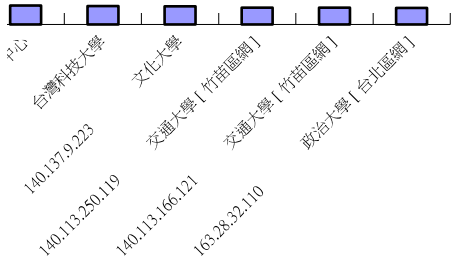
九十三年一至三月TANet使用流量排行(流出)

名次	一月		二月		三月	
	IP	流出量(Bytes)	IP	流出量(Bytes)	IP	流出量(Bytes)
1	140.127.177.17	42,274,990,897,406	140.127.177.17	31,331,823,146,501	140.127.177.17	17,479,249,400,873
2	140.117.11.7	3,127,888,788,678	163.28.1.29	7,396,833,289,859	140.117.11.81	12,219,458,621,591
3	163.28.1.29	2,424,732,698,148	140.117.11.81	6,312,279,641,222	163.28.1.29	6,967,449,688,325
4	140.129.74.102	2,003,329,062,509	140.117.99.100	4,398,578,121,121	140.117.99.100	4,694,658,815,084
5	203.64.246.17	2,000,511,429,768	140.127.177.17	4,311,566,414,302	140.127.177.17	3,474,526,566,155
6	163.28.4.2	1,882,080,104,669	140.129.74.102	2,059,691,047,194	163.28.80.2	3,158,896,132,032
7	140.118.31.55	1,620,096,917,655	163.28.4.2	1,917,384,558,693	140.129.74.102	3,073,631,433,901
8	163.28.82.2	1,561,779,936,738	163.28.4.1	1,878,425,825,983	163.28.4.1	2,915,173,148,520
9	140.117.99.100	1,557,460,919,518	203.64.246.17	1,713,560,903,766	163.28.4.2	2,848,574,927,951
10	140.137.9.223	1,522,236,159,134	140.113.250.119	1,487,998,324,180	140.117.205.31	2,456,867,238,633
11	140.117.11.81	1,519,473,847,361	203.64.247.100	1,481,141,252,662	210.240.186.17	2,330,455,392,627
12	163.28.4.1	1,494,922,157,985	203.72.153.16	1,405,202,474,176	203.64.246.17	2,076,798,737,830
13	203.64.247.100	1,362,163,163,857	163.28.82.2	1,340,872,402,630	203.72.153.16	2,002,270,528,431
14	210.240.186.17	1,332,010,543,613	140.118.31.55	1,295,416,227,737	140.117.205.55	1,905,812,666,318
15	140.113.27.187	1,331,825,896,851	140.137.9.223	1,281,517,053,479	192.192.231.196	1,777,744,794,817
16	140.110.20.90	1,226,339,961,447	140.110.20.90	1,197,684,315,826	140.111.77.234	1,750,357,729,787
17	163.28.32.110	1,208,770,442,955	140.113.166.121	1,147,884,925,194	140.126.102.31	1,715,217,375,026
18	140.116.223.224	1,060,480,231,113	140.129.57.82	1,119,343,654,062	140.122.92.208	1,712,775,728,218
19	140.113.27.181	985,595,359,482	140.128.48.2	1,059,671,144,406	140.113.250.119	1,577,709,653,021
20	140.128.48.2	975,784,538,770	140.113.27.163	1,055,257,598,843	163.25.95.250	1,476,088,030,968



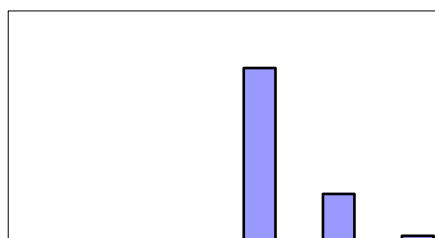


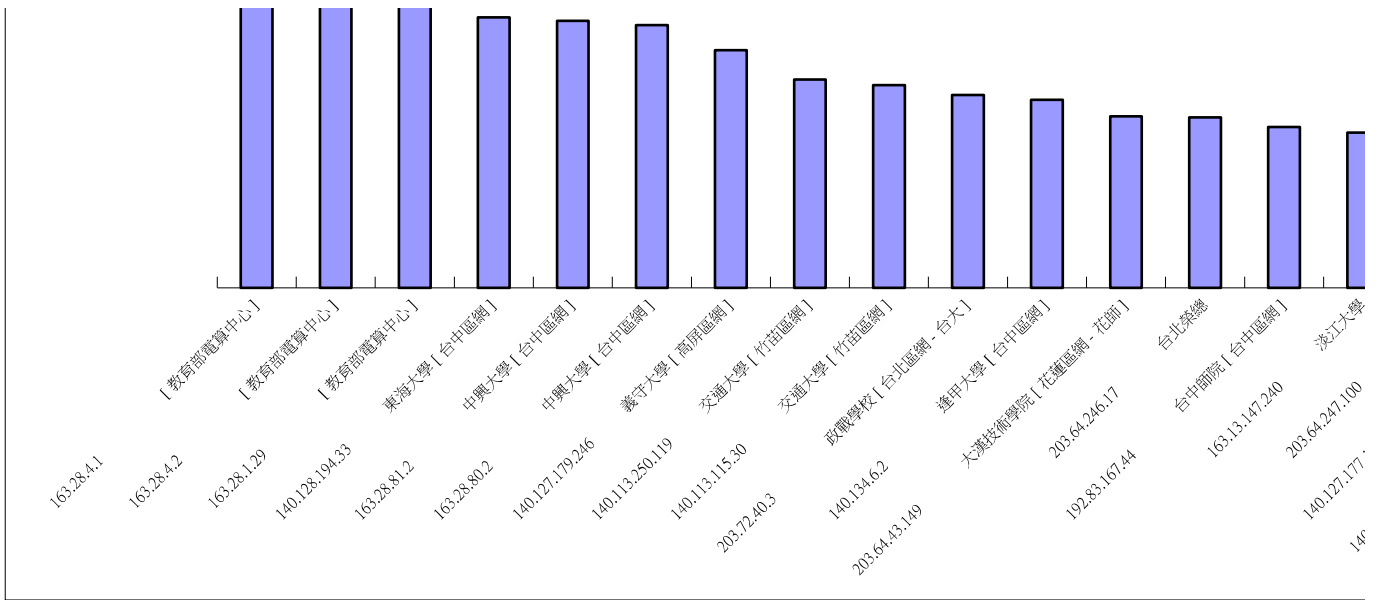
1~3月總計	
IP	流出量(Bytes)
140.127.177.17 義守大學[高屏區網]	91,086,063,444,780
140.117.11.81 中山大學[高屏區網]	20,051,212,110,174
163.28.1.29 [教育部電算中心]	16,789,015,676,332
140.117.11.7 中山大學[高屏區網]	10,913,981,769,135
140.117.99.100 中山大學[高屏區網]	10,650,697,855,723
140.129.74.102 陽明大學	7,136,651,543,604
163.28.4.2 [教育部電算中心]	6,648,039,591,313
163.28.4.1 [教育部電算中心]	6,288,521,132,488
203.64.246.17 台北榮總	5,790,871,071,364
210.240.186.17 台北師院	4,555,985,793,796
台北縣網[台北區網- 政大]	4,363,396,003,504
163.28.82.2 中興大學[台中區網]	4,296,643,419,205
203.64.247.100 台北榮總	4,133,680,415,648
163.28.80.2 中興大學[台中區網]	4,053,545,062,830
國家高速網路與計算 中心	3,801,479,199,447
140.118.31.55 台灣科技大學	3,679,058,793,543
140.137.9.223 文化大學	3,619,260,083,953
140.113.250.119 交通大學[竹苗區網]	3,367,673,520,080
140.113.166.121 交通大學[竹苗區網]	3,347,705,270,610
163.28.32.110 政治大學[台北區網]	3,280,332,057,511



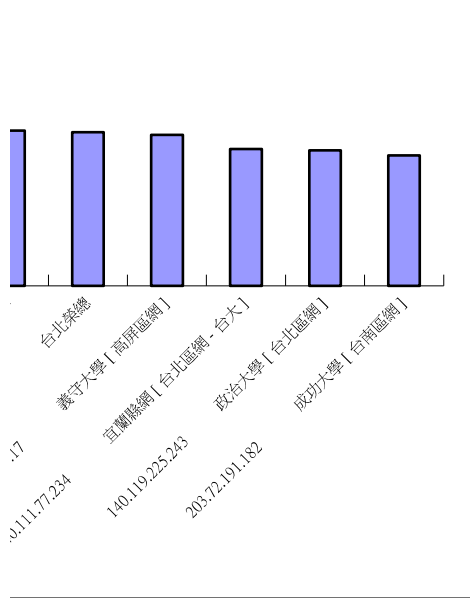
九十三年一至三月TANet使用流量排行(流入)

名次	一月		二月		三月	
	IP	流入量(Bytes)	IP	流入量(Bytes)	IP	流入量(Bytes)
1	163.28.4.1	1,847,327,402,338	163.28.4.1	2,216,041,619,897	163.28.4.1	3,481,355,147,144
2	163.28.4.2	1,684,475,661,120	163.28.1.29	1,995,193,504,622	140.113.115.30	3,384,252,926,518
3	140.128.194.33	1,550,747,305,555	163.28.4.2	1,563,082,631,523	163.28.80.2	3,212,174,381,224
4	163.28.81.2	1,223,781,468,242	140.113.250.119	1,461,997,190,417	140.127.179.246	2,677,163,884,594
5	203.64.246.17	1,035,678,731,133	140.127.179.246	1,287,448,420,284	140.111.77.234	2,283,525,909,756
6	140.127.177.17	1,031,020,797,706	140.128.194.33	1,226,369,347,244	163.28.1.29	2,264,082,406,941
7	210.60.28.249	915,197,019,573	203.72.40.3	1,185,235,245,989	163.28.4.2	2,198,799,225,704
8	140.134.6.2	867,723,423,540	140.134.6.2	1,117,966,670,994	163.28.81.2	2,148,575,976,193
9	163.28.32.100	793,419,771,605	163.28.81.2	1,079,561,700,802	140.111.4.239	2,010,649,945,860
10	163.28.48.72	762,622,645,598	140.127.177.17	929,028,712,109	140.128.194.33	1,736,354,540,638
11	140.128.28.252	740,597,410,269	203.64.43.149	928,755,397,069	140.113.250.119	1,652,517,107,199
12	210.60.28.236	734,478,986,471	203.64.246.17	923,729,095,331	203.72.40.3	1,403,174,502,792
13	203.64.43.149	728,111,526,625	203.64.247.100	875,195,826,886	192.83.167.44	1,320,394,404,145
14	203.64.247.100	712,011,729,398	163.28.80.2	866,211,439,204	140.119.225.243	1,310,410,853,046
15	203.72.176.194	684,097,827,490	163.13.147.240	792,544,545,010	203.72.176.196	1,304,164,682,766
16	140.111.1.248	665,049,017,201	192.83.167.44	749,114,573,222	210.71.22.178	1,296,329,578,773
17	210.240.221.253	653,660,912,416	163.28.32.100	710,102,999,640	163.13.147.240	1,254,616,318,677
18	203.68.92.2	629,484,565,416	140.131.1.42	695,608,720,138	210.240.221.252	1,220,257,353,426
19	203.72.40.3	629,339,367,107	192.83.167.49	686,717,497,450	203.72.191.182	1,207,227,996,351
20	163.23.225.106	621,960,250,297	203.71.95.126	638,733,795,818	203.64.43.149	1,203,029,274,447





1~3月總計	
IP	流入量(Bytes)
163.28.4.1 [教育部電算中心]	7,544,724,169,379
163.28.4.2 [教育部電算中心]	5,446,357,518,347
163.28.1.29 [教育部電算中心]	4,744,716,414,879
140.128.194.33 東海大學[台中區網]	4,513,471,193,437
163.28.81.2 中興大學[台中區網]	4,451,919,145,237
163.28.80.2 中興大學[台中區網]	4,380,309,118,217
140.127.179.246 義守大學[高屏區網]	3,964,612,304,878
140.113.250.119 交通大學[竹苗區網]	3,477,426,195,327
140.113.115.30 交通大學[竹苗區網]	3,384,252,926,518
政戰學校[台北區網- 台大]	3,217,749,115,888
140.134.6.2 逢甲大學[台中區網]	3,139,662,608,604
大漢技術學院[花蓮 區網-花師]	2,859,896,198,141
203.64.246.17 台北榮總	2,843,370,113,362
192.83.167.44 台中師院[台中區網]	2,685,059,214,945
163.13.147.240 淡江大學	2,589,835,518,711
203.64.247.100 台北榮總	2,561,373,755,617
140.127.177.17 義守大學[高屏區網]	2,518,274,552,366
宜蘭縣網[台北區網- 台大]	2,283,525,909,756
140.119.225.243 政治大學[台北區網]	2,259,837,463,384
203.72.191.182 成功大學[台南區網]	2,176,722,341,647

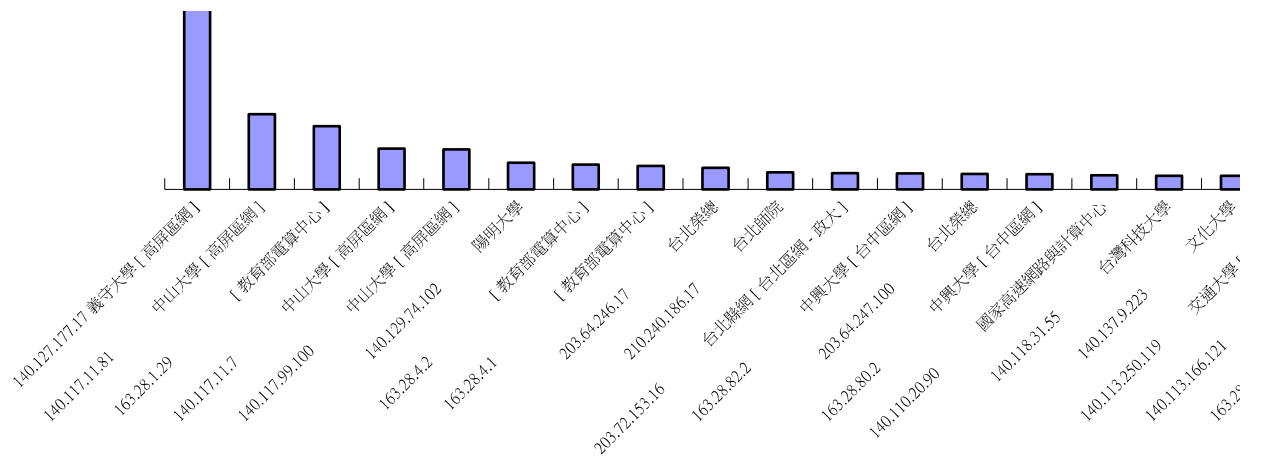




九十三年一至三月TANet使用流量排行(總量)

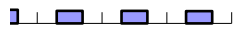
名次	一月		二月		三月	
	IP	流量(Bytes)	IP	流量(Bytes)	IP	流量(Bytes)
1	140.127.177.17	43,306,011,695,110	140.127.177.17	32,260,851,858,612	140.127.177.17	18,145,628,993,199
2	163.28.4.2	3,566,555,765,787	163.28.1.29	9,392,026,794,475	140.117.11.81	12,461,758,201,677
3	163.28.4.1	3,366,574,261,717	140.117.11.81	6,444,968,560,617	163.28.1.29	9,231,532,095,263
4	140.117.11.7	3,181,814,279,347	140.117.99.100	4,458,789,996,881	163.28.4.1	6,396,528,295,660
5	203.64.246.17	3,036,190,160,899	140.117.11.7	4,401,266,597,368	163.28.80.2	6,371,070,513,254
6	163.28.1.29	2,910,173,201,467	163.28.4.1	4,094,467,445,878	163.28.4.2	5,047,374,153,653
7	140.129.74.102	2,129,308,565,345	163.28.4.2	3,480,467,190,215	140.117.99.100	4,798,070,694,691
8	203.64.247.100	2,091,349,900,259	140.113.250.119	2,949,995,514,598	140.111.77.234	4,033,883,639,542
9	140.128.194.33	1,869,989,862,289	203.64.246.17	2,637,289,999,091	140.117.11.7	3,552,685,928,034
10	210.240.186.17	1,732,378,026,349	203.64.247.100	2,356,337,079,552	140.113.115.30	3,447,715,943,736
11	163.28.82.2	1,652,382,949,781	140.129.74.102	2,157,728,670,699	140.127.179.246	3,429,734,239,090
12	140.118.31.55	1,622,856,543,821	163.28.80.2	1,760,860,370,004	140.129.74.102	3,311,821,022,035
13	140.137.9.223	1,571,406,239,478	163.13.147.240	1,593,965,749,352	140.113.250.119	3,230,226,760,219
14	140.117.11.81	1,558,060,734,664	203.72.40.3	1,591,849,976,230	203.64.246.17	2,960,761,024,728
15	140.117.99.100	1,548,787,144,993	140.127.179.246	1,571,263,106,629	210.240.186.17	2,919,552,586,409
16	163.13.147.240	1,433,763,180,192	140.128.194.33	1,476,025,293,880	140.119.225.243	2,729,594,434,828
17	140.113.27.187	1,358,487,921,928	203.72.153.16	1,438,599,749,316	140.117.205.31	2,462,740,194,350
18	140.110.20.90	1,287,635,327,911	163.28.82.2	1,418,458,920,961	140.128.194.33	2,446,275,891,602
19	163.28.32.110	1,212,062,496,332	203.64.43.149	1,416,520,058,645	163.13.147.240	2,292,647,449,431
20	163.28.81.2	1,203,423,257,600	140.118.31.55	1,314,384,240,183	203.64.247.100	2,282,498,836,101





## 附件二

1~3月總計	
IP	流量(Bytes)
140.127.177.17 義守大學[高屏區網]	91,086,063,444,780
140.117.11.81 中山大學[高屏區網]	20,051,212,110,174
163.28.1.29 [教育部電算中心]	16,789,015,676,332
140.117.11.7 中山大學[高屏區網]	10,913,981,769,135
140.117.99.100 中山大學[高屏區網]	10,650,697,855,723
140.129.74.102 陽明大學	7,136,651,543,604
163.28.4.2 [教育部電算中心]	6,648,039,591,313
163.28.4.1 [教育部電算中心]	6,288,521,132,488
203.64.246.17 台北榮總	5,790,871,071,364
210.240.186.17 台北師院	4,555,985,793,796
台北縣網[台北區網- 政大]	4,363,396,003,504
163.28.82.2 中興大學[台中區網]	4,296,643,419,205
203.64.247.100 台北榮總	4,133,680,415,648
163.28.80.2 中興大學[台中區網]	4,053,545,062,830
國家高速網路與計算 中心	3,801,479,199,447
140.118.31.55 台灣科技大學	3,679,058,793,543
140.137.9.223 文化大學	3,619,260,083,953
140.113.250.119 交通大學[竹苗區網]	3,367,673,520,080
140.113.166.121 交通大學[竹苗區網]	3,347,705,270,610
163.28.32.110 政治大學[台北區網]	3,280,332,057,511



竹研區總]

交通大學 [竹研區總]

政治大學 [台大區總]

8.32.110