



Global Health Program

National Taiwan University
College of Public Health



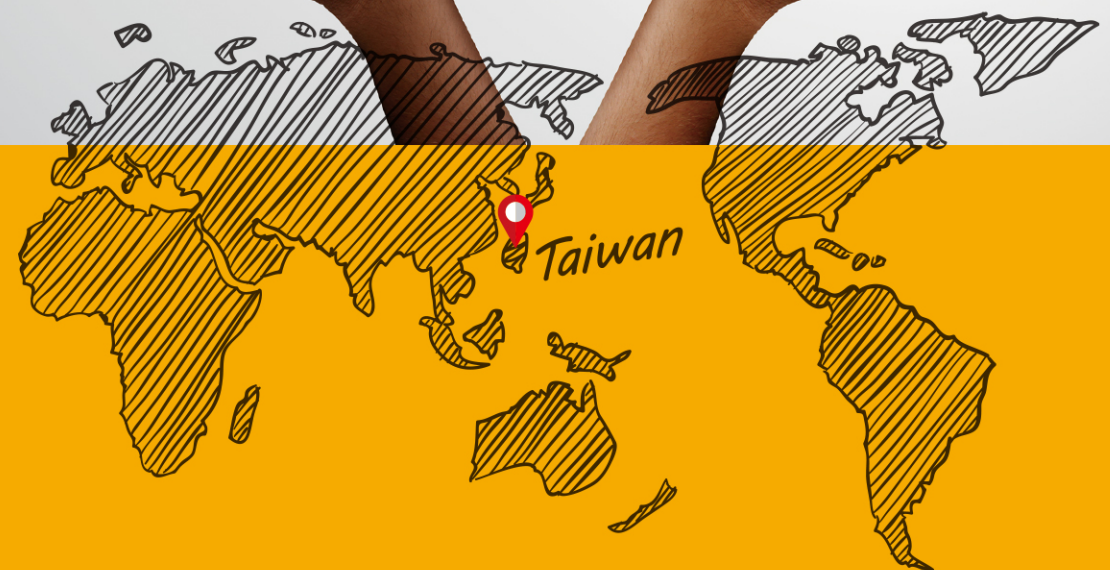
Email: ntumgh@ntu.edu.tw

Tel: +886-2-33668077

+886-2-33668094



Master's/Doctoral Program **in** Global Health



*Empowering the Next Generation
of Global Health Leaders*



Global health Program

National Taiwan University
College of Public Health



Contents

Highlights	01
Degrees offered by Global Health Program	02
College of Public Health Facts and Figures	03
Application on SOPHAS	05
GHP Students' Countries	06
InDiE Initiative	07
Career Development	08
Tuition Fee	09
Scholarship Opportunities	09

Highlights

of National Taiwan University
Global Health Program:

1

National Taiwan University Global Health Program is located in the center of Taiwan's capital city, Taipei, with access to abundant resources and opportunities.

2

We are a multidisciplinary program aiming at equipping students with academic and practical expertise to address public health issues locally and globally.

3

We are an English program with an international student body. Our faculty comes from backgrounds in humanities, social sciences, and natural sciences, such as anthropology, law, sociology, communications, epidemiology, policy and management, and environmental and occupational health science, and others.

4

As the first program in Asia accredited by the U.S. Council on Education for Public Health (CEPH), we adhere to the CEPH core values diligently, manifested in our course design.

5

We partner with the Fulbright Foundation and offer multiple scholarship opportunities.

6

NTU College of Public Health has teamed up with Kyoto University on the Double Degree Program (DDP) since 2017. If you are enrolled in the NTU Global Health Program, you are qualified to apply for DDP.



Field work in Malawi

Field visit in Taipei

Degrees offered by the Global Health Program

Program	Intake	Application Period	Semester Duration
Master of Science in Global Health Program	Fall	August 18 – December 27	September to January
	Spring	August 18 – September 25	February to July
Doctor of Philosophy in Global Health Program	Fall	August 18 – December 27	September to January



Field visit in Hualien



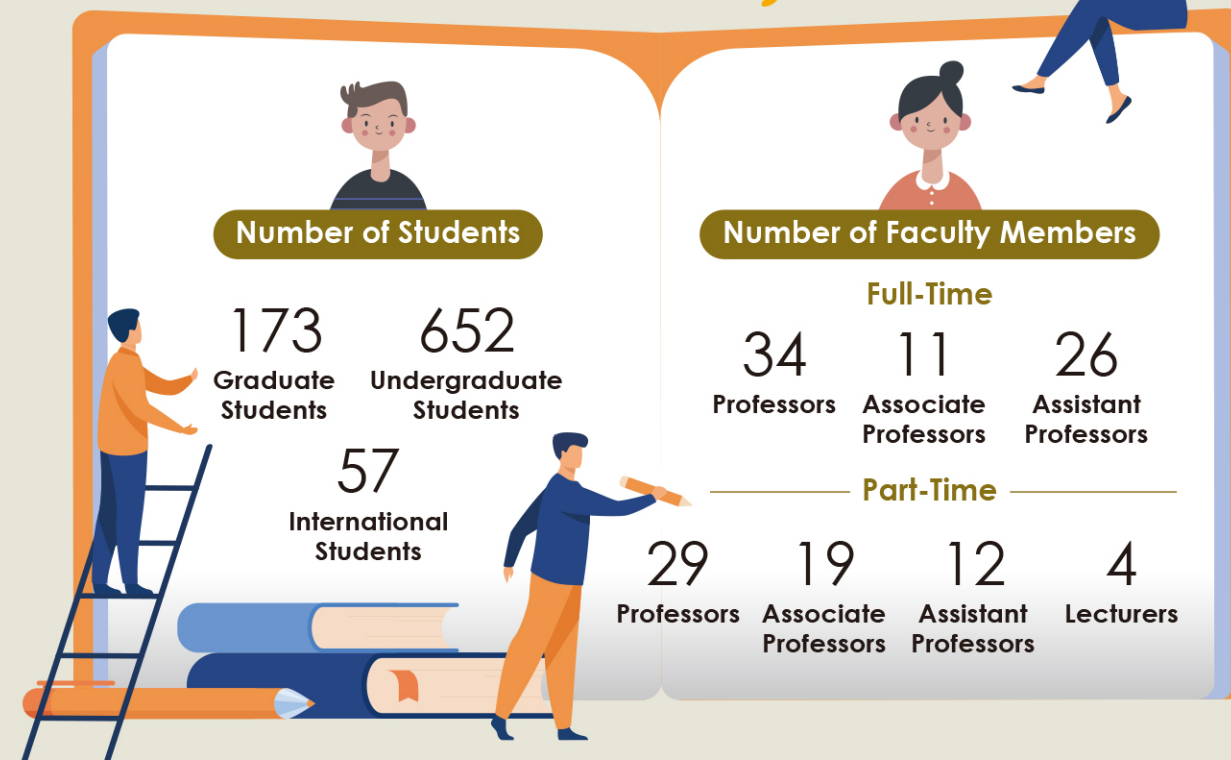
Internship in Hsinchu City Government

CEPH ACCREDITED
SCHOOLS OF PUBLIC HEALTH



NTU College of Public Health is the first CEPH accredited school of public health outside North America.

College of Public Health Facts and Figures





Field visit in Taipei



Field visit in Taipei

NTU College of Public Health Introduction

National Taiwan University College of Public Health (NTUCPH) was formerly known as the "Institute of Tropical Medicine" established in 1939 and became independent from the medical school in 1993. It is NTU's eighth college and Taiwan's first fully independent public health college.

- NTUCPH consists of the Department of Public Health (undergraduate), Master of Public Health, Master and Doctorate in Global Health, Institute of Epidemiology and Preventative Medicine, Institute of Health Policy and Management, Institute of Health Behaviors and Community Sciences, Institute of Environmental and Occupational Health Sciences, Institute of Food Safety and Health, Institute of Health Data Analytics and Statistics, and the Executive Master of Health Administration. GHP students are able to take classes across NTUCPH programs and institutes.
- In 2020, NTUCPH was awarded the "2020 ASPPH Harrison C. Spencer Award for Outstanding Community Service", affirming the efforts in sharing cooperative models between the school and the community.

Application on SOPHAS

You must apply on the SOPHAS application portal (sophas.org). SOPHAS is the centralized application service of the U.S. Association of Schools and Programs of Public Health (ASPPH) which represents CEPH-accredited schools and programs of public health. The SOPHAS website has clear instructions on how to select, track and manage your application process. Please use the search criteria in SOPHAS to find the NTU Global Health Program.

For more information on application, please visit the Global Health Program website:



Master website



PhD website



GHP Students' Countries



InDiE (Inclusion, Diversity & Equality) Initiative

We hope to support student-led activities and promote collaborations among CPH students. Thus, we fund proposals for events/activities, including but not limited to:

- Participating in and/or promoting local activism events
- Health justice-related seminars
- Photo exhibitions and/or photo essay competitions
- NTU-GHP and/or CPH blog sites
- Student-run online magazine and/or symposiums
- Holidays-related cultural events
- Students' rights and workers' rights campaigns
- GHP's social media visibility (Facebook, Twitter, Instagram etc.)
- Postgraduate conferences on global health-related issues
- Mental health awareness, literacy, and promotion events
- Inter-cohort WiP (work-in-progress) forums and/or roundtables



*InDiE Activity-
"Nursing Occupational
Health Workshops"*

Career Development

The Global Health Program provides career development opportunities by linking students to different sectors:

University Sector

Career opportunities in the university sector include research and teaching. A master's degree opens the opportunity to further education such as the Ph.D. in Global Health offered by NTU College of Public Health, Medical School, and many other degrees.

Development Agency

Students from GHP also could work in national and international organizations (INGOs, NPOs, NGOs) such as WHO, World Bank, United Nations (UN), Pan America Health Organization (PAHO) in management, monitoring, developing, event planning, etc.

Private Sector

Students from GHP could work in consultancies and health care industries such as pharmaceuticals, medical companies, food industry, environmental and occupational health areas as well as private trusts and foundations such as Bill and Melinda Gates Foundation.

Government

Government offices are a career choice for many GHP students, many of whom go on to work in policy related work such as the health ministry, immigration, environment, foreign affairs as well as medical and healthcare systems administration.

Career Series Lecture

Global Health Program hosts career series lectures to help our students' career planning.

Tuition Fee

The tuition fee is set at NTD\$150,000 (~USD\$5,000) per semester. (Please check our website for any updates)

Master's degree				
1 st semester NTD\$150,000	2 nd semester NTD\$150,000	3 rd semester NTD\$150,000	4 th semester NTD\$150,000	
PhD degree				
1 st semester NTD\$150,000	2 nd semester NTD\$150,000	3 rd semester NTD\$150,000	4 th semester NTD\$150,000	5 th semester & on NTD\$31,180

Scholarship Opportunities

Scholarship	Unit	Information
Taiwan Scholarship	MOE and MOFA Taiwan	https://www.studyintaiwan.org/
Fulbright Scholarship	US Department of State	https://eca.state.gov/fulbright
GHP scholarship	GHP	https://ghp.ntu.edu.tw/datas/upload/site/2022042807555994.pdf

Please visit our website to see more information regarding scholarships available: <https://ghp.ntu.edu.tw/credit/tuition>

