



The Bachelor Program in
**Smart Sustainable
Development and Management**

Bachelor Program in Smart Sustainable Development and Management National Taipei University

Apply

Link to Program's website / Admission
Fall semester /

from **Feb. 6th** to **Apr. 30th**

Spring semester /

from **early Sep.** to **end Oct.**

About the Program

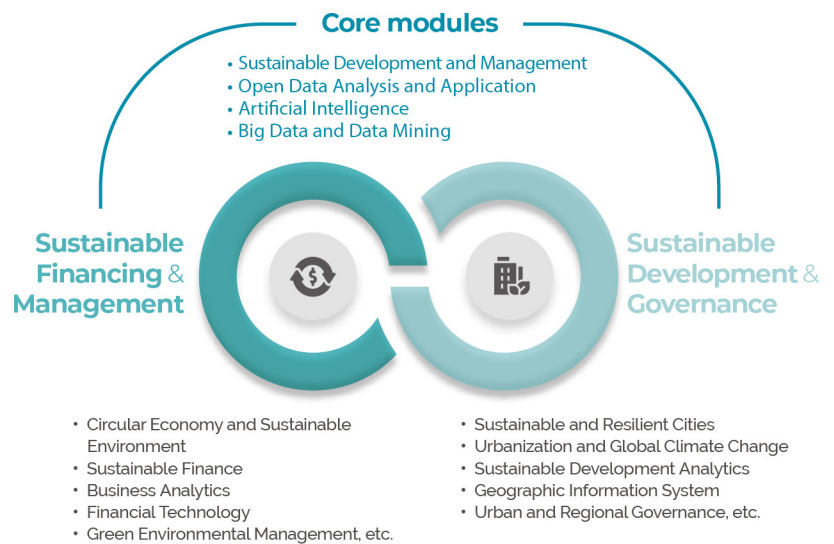
In response to the escalation of climate change caused by carbon emissions, governments, industries, corporations, consumers, and even investors have begun to pay more attention to the widespread impact of climate change, as well as the need for global talents specializing in addressing it. With the goal of fostering globalized industry, academic, and government leaders, the Bachelor's Program in Smart Sustainable Development and Management emphasizes three key areas: interdisciplinary teaching, the integration of artificial intelligence/big data with sustainable financing and management along with sustainable developments, and the latest industry trends. Designed to improve interdisciplinary teaching and talent development in response to pressing worldwide social needs concerning environmental sustainability, financial sustainability, smart technologies, climate change and net zero emissions, the Bachelor's Program in Smart Sustainable Development and Management is offered in English. Multi-disciplinary training and problem-based learning are provided in economics, environmental studies, management, social science, and information science. The interdisciplinary and integrated learning environment enables students to become professionals in enterprise sustainability management.

Curriculum

The curriculum is designed to help students develop a solid understanding of sustainable development and management during their freshmen and sophomore years. Training sessions cover artificial intelligence/big data and program design, which ensure students possess sufficient information literacy and analytical skills. During junior and senior years, students enroll in elective professional courses based on their own interests and capabilities, reinforcing their professional competence. Our courses aim to strengthen students' employability skills and professional competence in climate and environmental changes and their associated industries and academic research, focusing on two core dimensions: sustainable financing and management, as well as sustainable development and governance.

Scholarship(s)

This program offers attractive full and partial scholarships. For the latest scholarship information, please visit the program's website.



Career opportunities

As investors pay more attention to environmental, social, and corporate governance (ESG) investing, major companies worldwide have created the executive position of chief sustainability officer (CSO) and suitability managers who are tasked with planning and overseeing their company's corporate social responsibility (CSR) and environmental, social, and governance (ESG) strategies. Employers of our graduates include government policymakers, the public sector, local governments, traditional industry, polluting industries, electronics and technology industries, finance and service industries, consultancy, research units, and academia.

Contacts

<https://ssdm.ntpu.edu.tw>
ssdm@gm.ntpu.edu.tw

